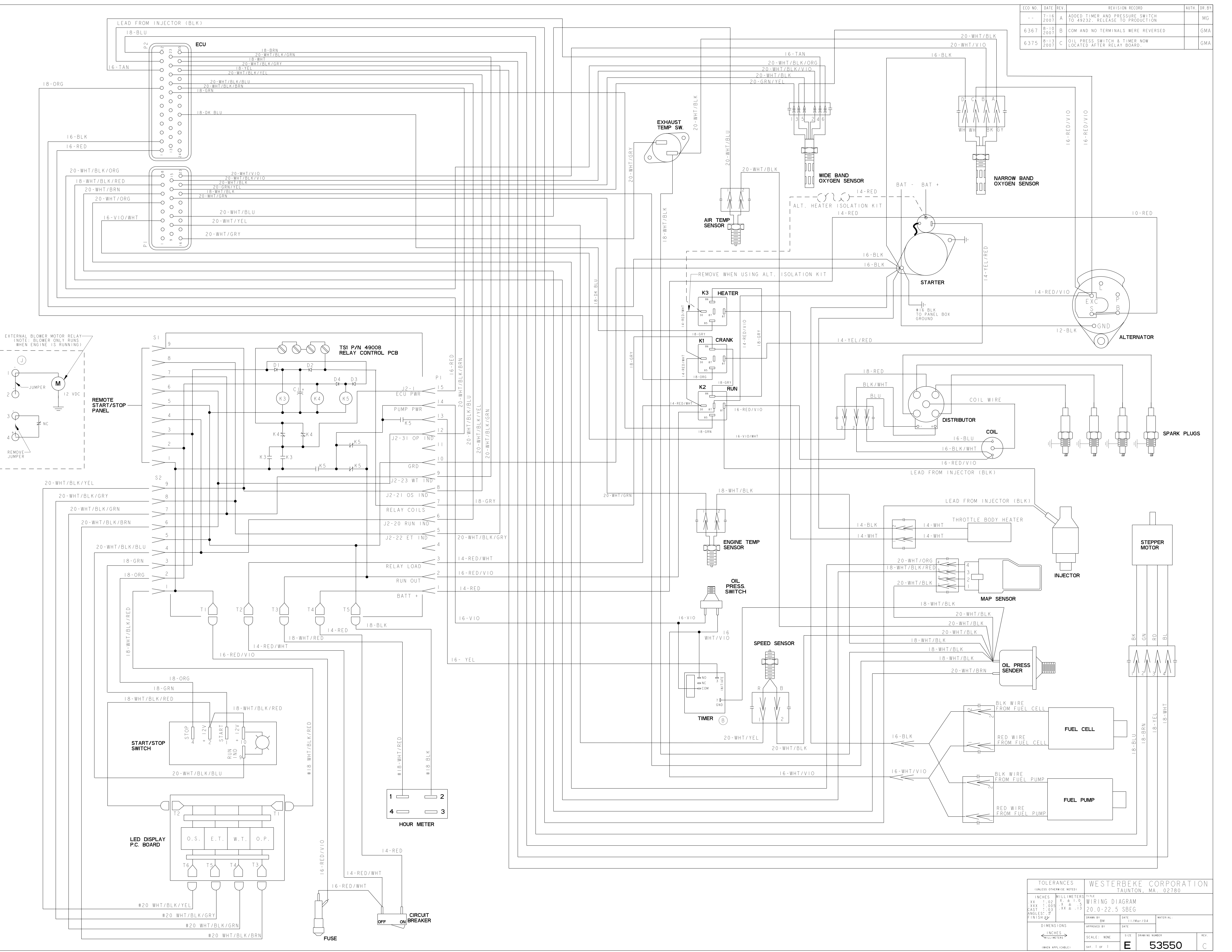


| ECO NO. | DATE      | REV. | REVISION RECORD   | AUTH. | DR. BY |
|---------|-----------|------|---|-------|--------|
| --      | 7-16 2007 | A    | ADDED TIMER AND PRESSURE SWITCH TO 49232. RELEASE TO PRODUCTION |       | MG     |
| 6367    | 8-10 2007 | B    | COM AND NO TERMINALS WERE REVERSED                              |       | GMA    |
| 6375    | 8-13 2007 | C    | OIL PRESS SWITCH & TIMER NOW LOCATED AFTER RELAY BOARD.         |       | GMA    |



| TOLERANCES (UNLESS OTHERWISE NOTED) |              | WESTERBEKE CORPORATION<br>TAUNTON, MA. 02780 |            |
|-------------------------------------|--------------|--|------------|
| INCHES                              | MILLIMETERS  | TITLE  |            |
| .XX ± .02                           | X ± 1.0      | WIRING DIAGRAM                               |            |
| .XXX ± .005                         | XX ± .13     | 20.0-22.5 SBEG                               |            |
| CAST ± .03                          | FINISH ± .01 | DRAWN BY                                     | DATE       |
|                                     |              | BM   | 11/Mar/104 |
| DIMENSIONS                          |              | APPROVED BY                                  | DATE       |
| SCALE: NONE                         |              |  |            |
| SIZE                                |              | DRAWING NUMBER                               |            |
| SHEET 1 OF 1                        |              | E 53550                                      |            |
|                                     |              | REV. C                                       |            |